



# Harrisburg Area Transportation Study **REGIONAL FREIGHT PLAN**

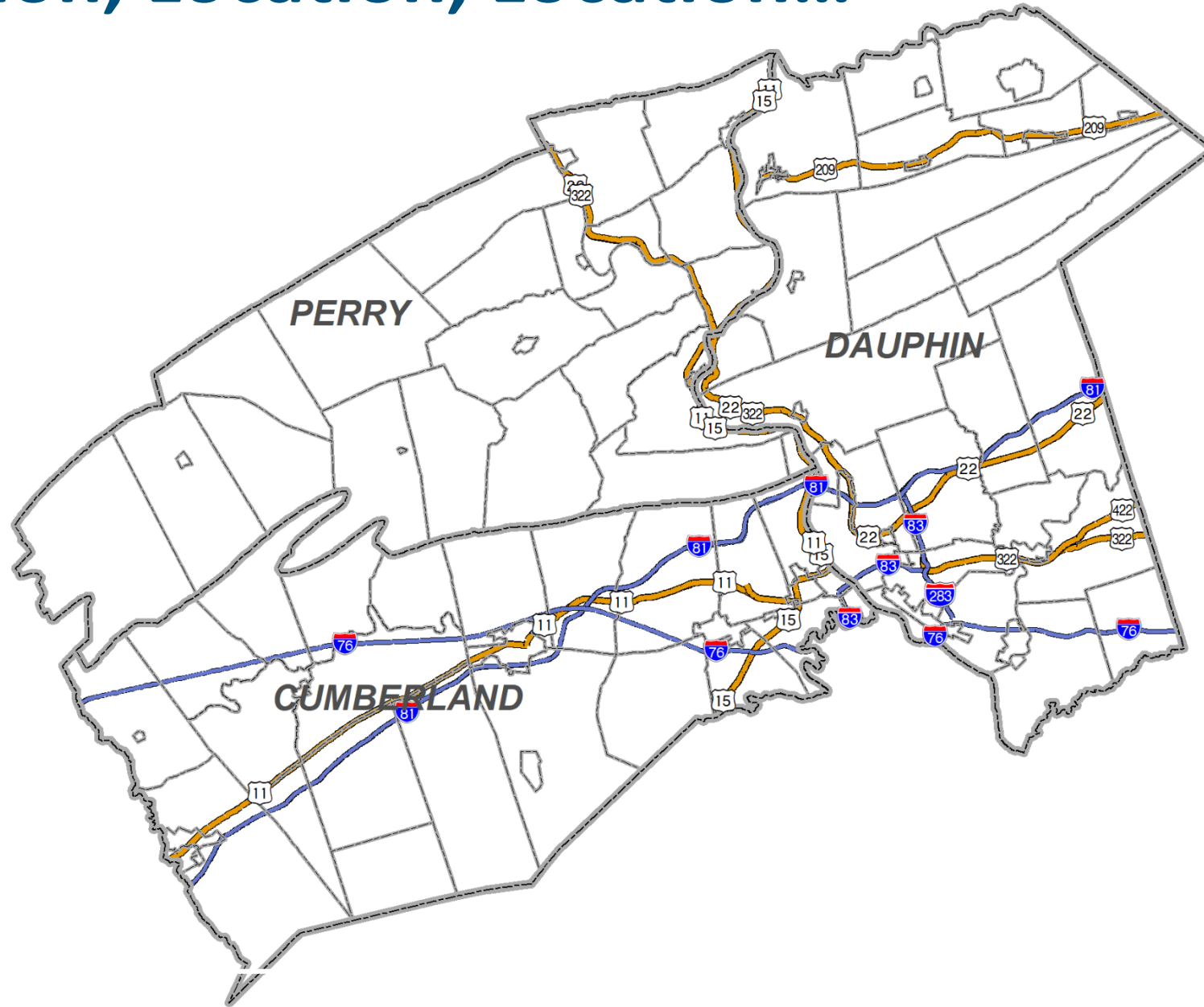


Steve Deck, AICP

Executive Director

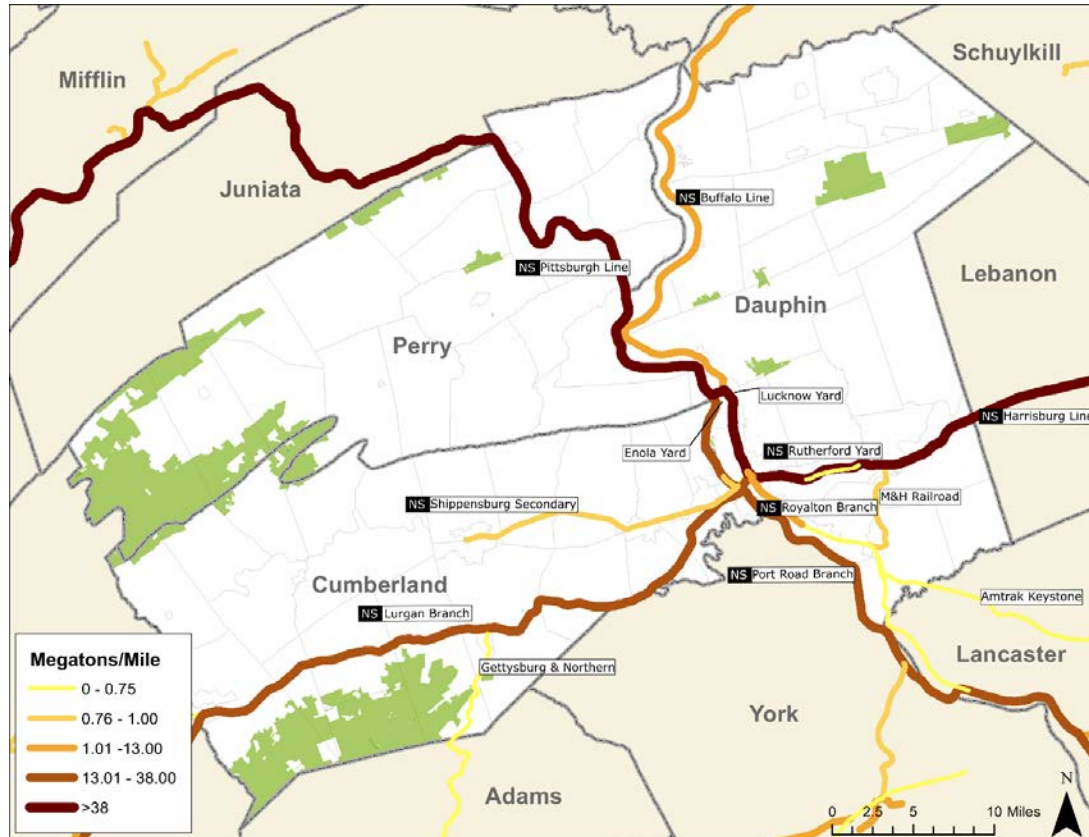
Tri-County Regional  
Planning Commission

# Location, Location, Location...

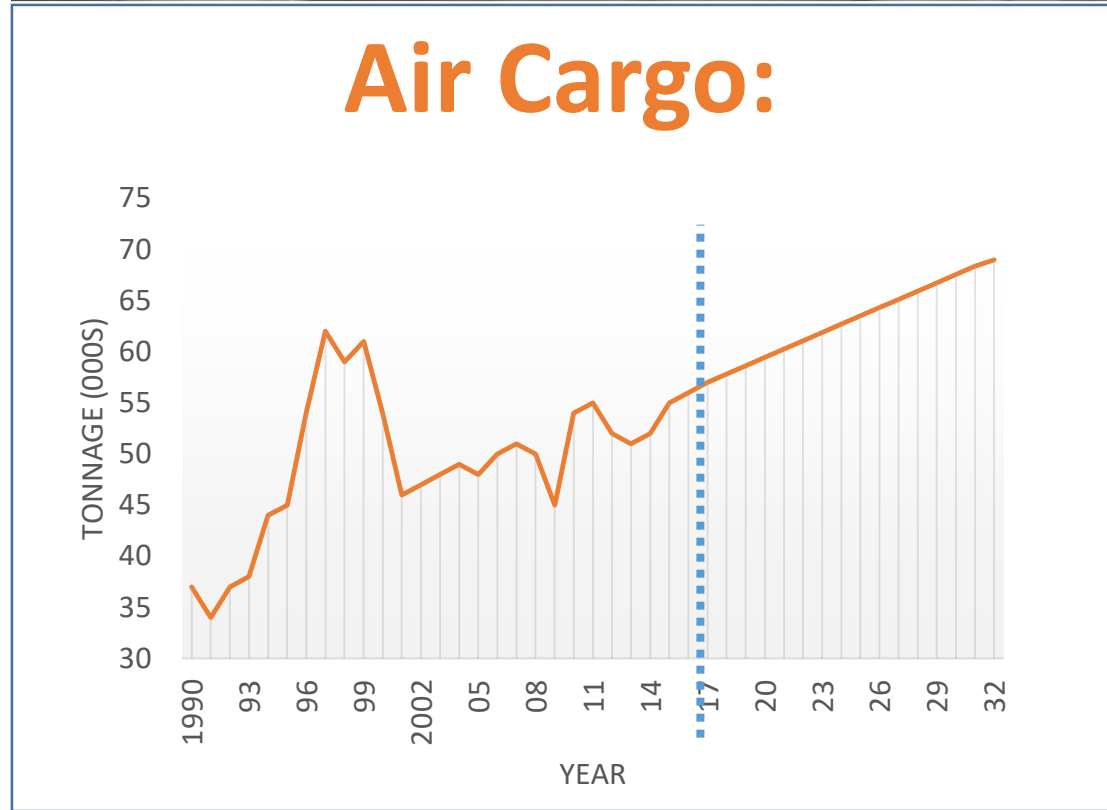




# Rail

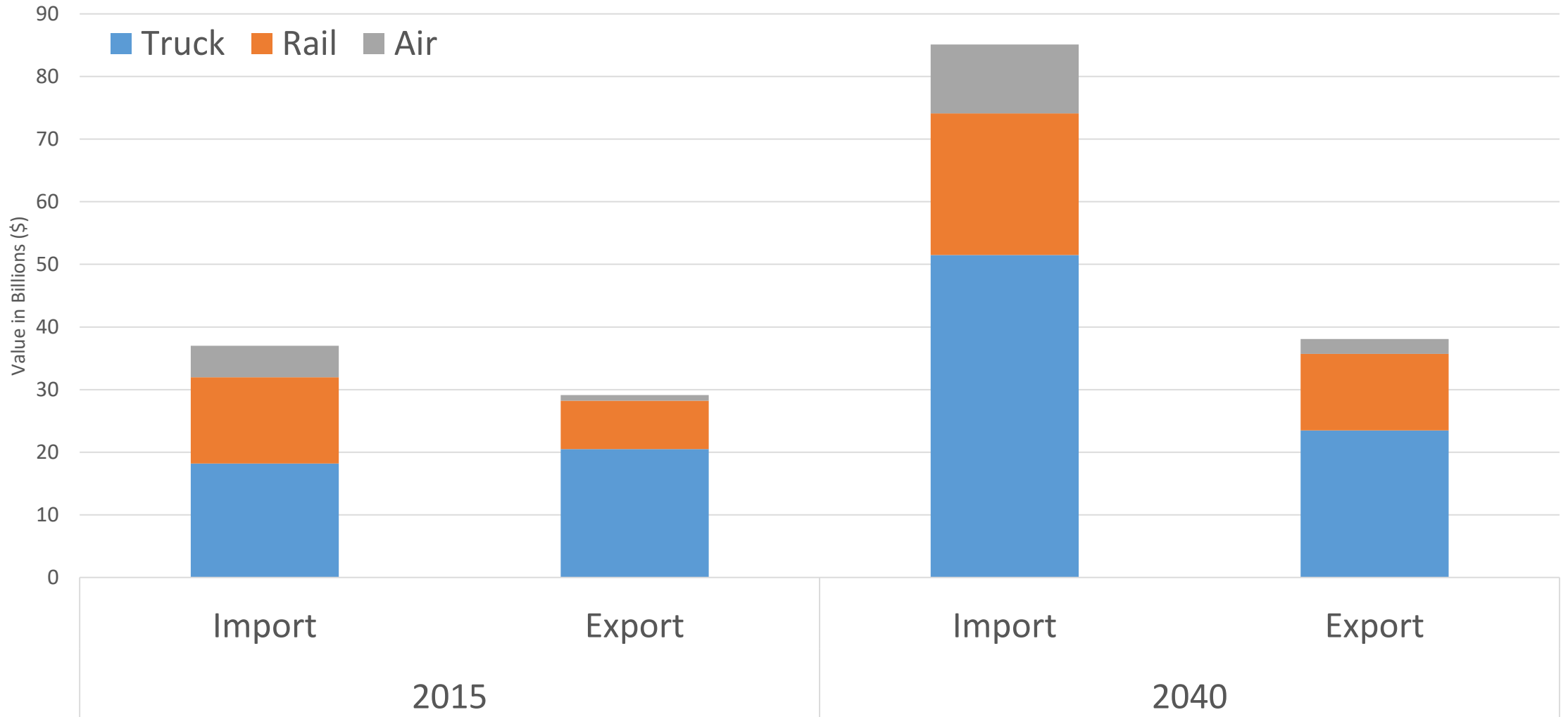


# Air Cargo:

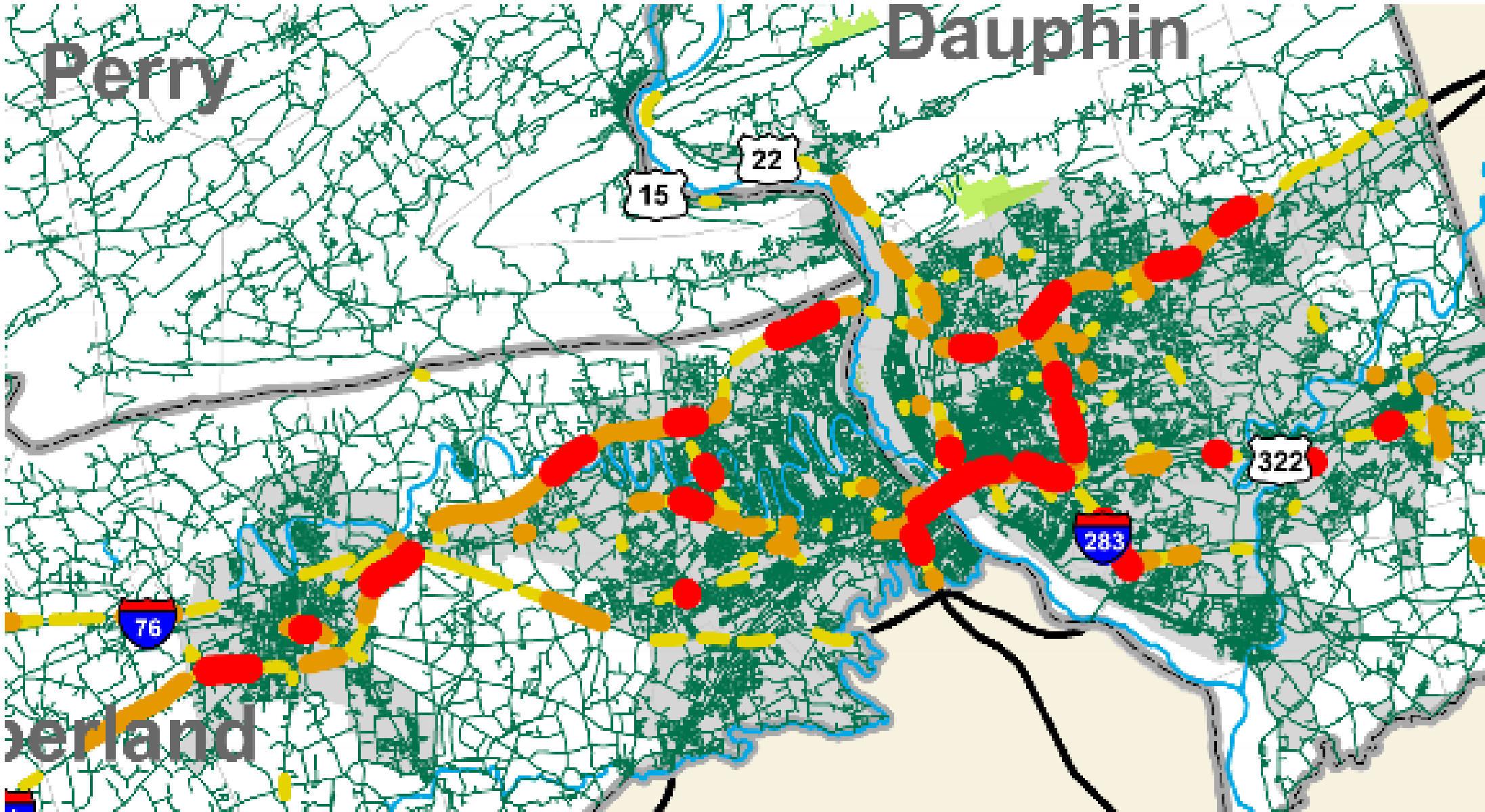


# Commodity Flow:

## Value by Mode, 2015 and 2040

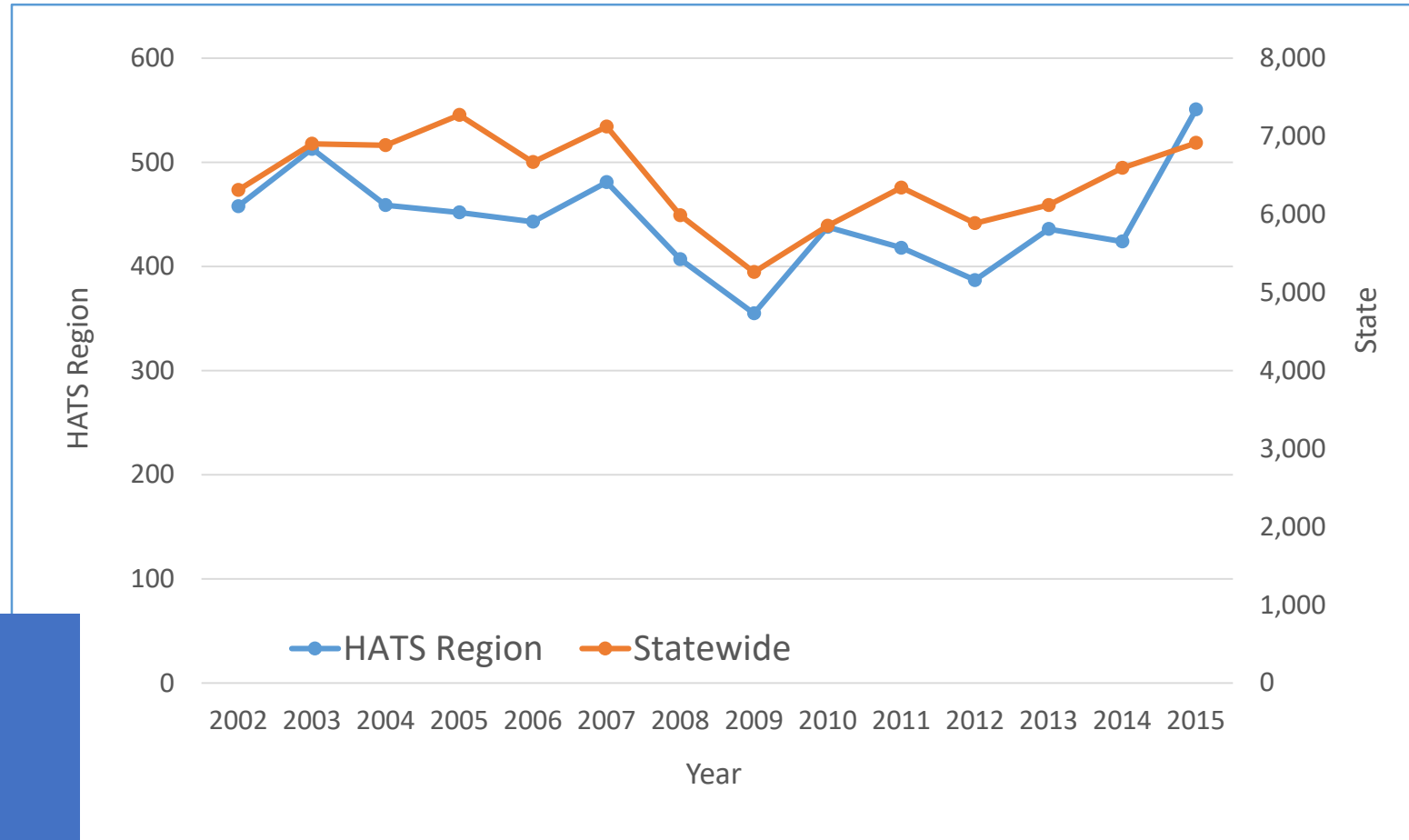


# Congestion in Freight Movement:



# Safety in Freight Movement:

## Truck Crashes, Region and State, 2002-15

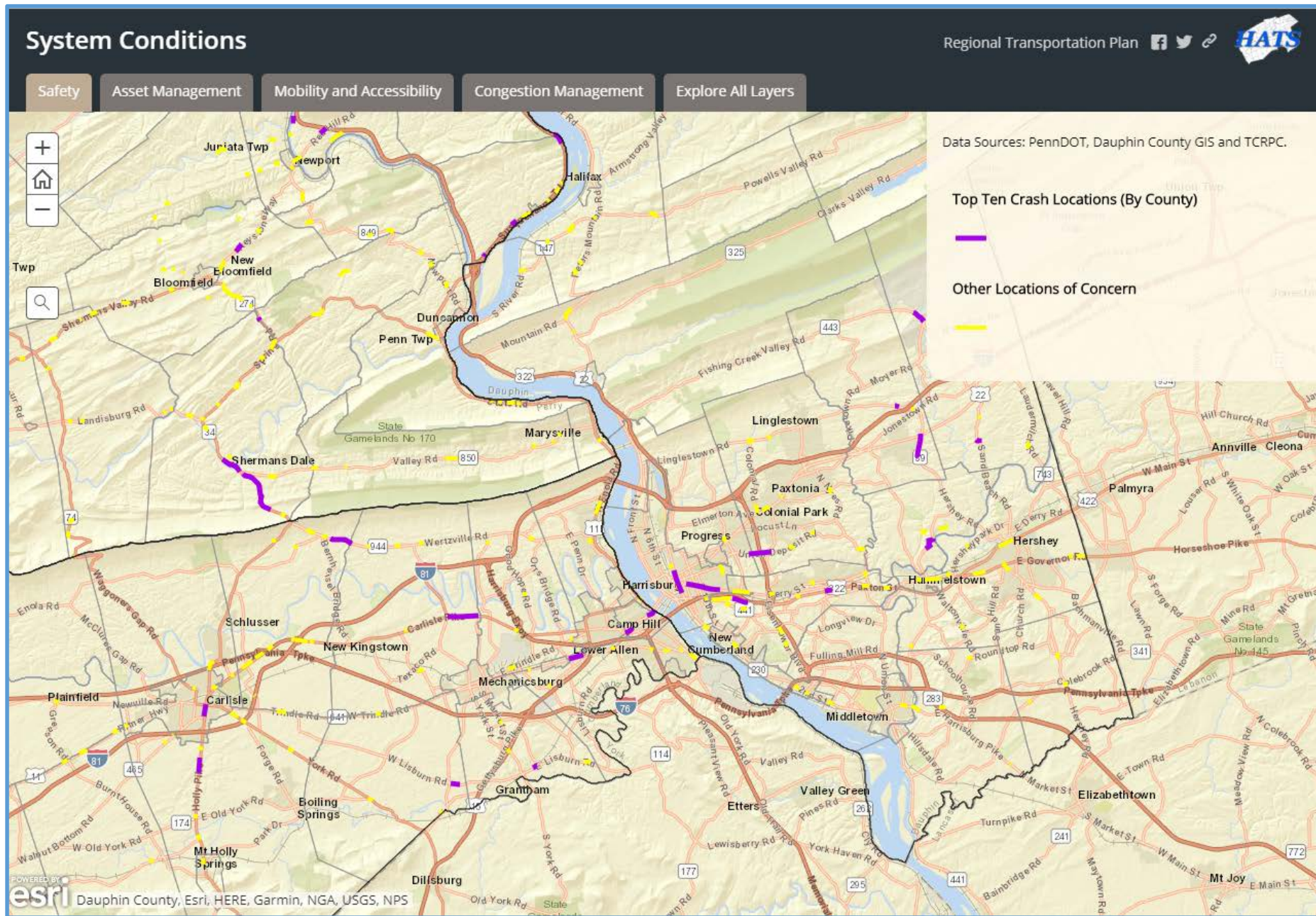


### Average Annual Truck Crashes 2002-15

Cumberland.....	212
Dauphin.....	197
Perry.....	25

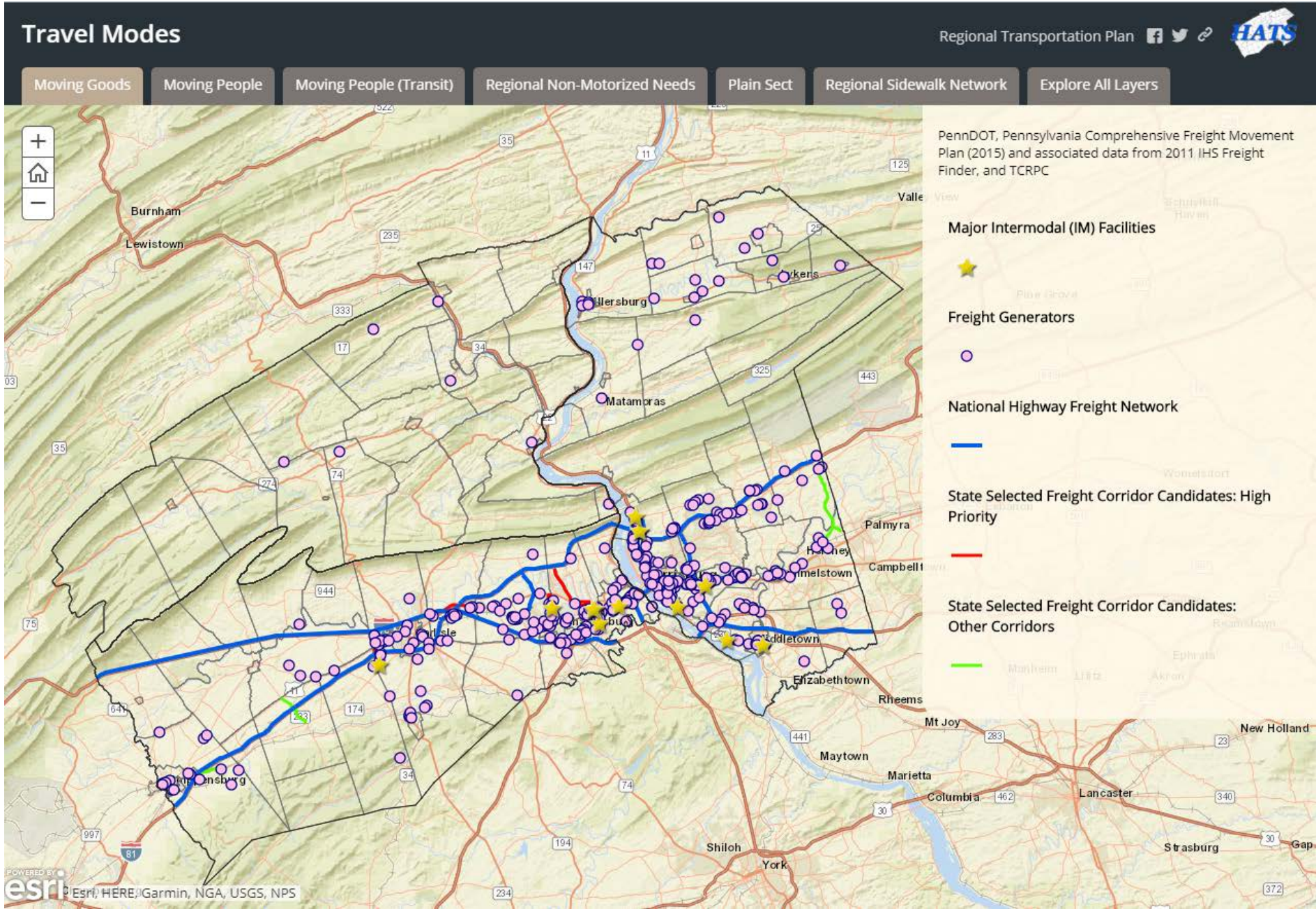


# Safety Throughout the System:



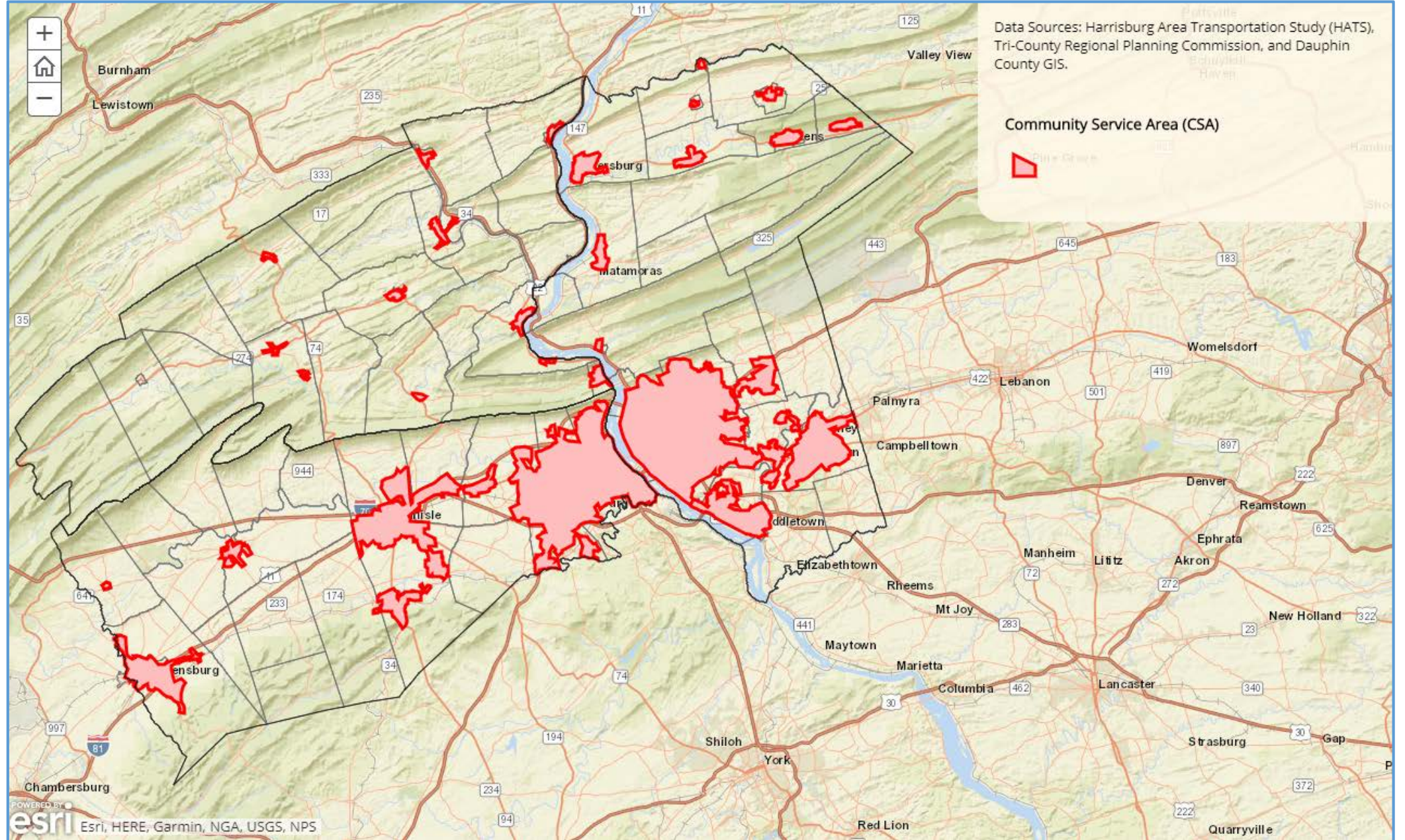


# Critical Urban and Rural Freight Corridors:





# Managing Growth:





# Key Activities Moving Forward:

- I-83 Improvement Project
- I-283/283 Reconstruction
- I-81 Master Plan Development
- Increased Focus on Safety Improvement
- Traffic Incident Management (TIM) Teams
- Connected/Autonomous Vehicle Strategy
- Regional Growth Management Plan Implementation
- Online, Fluid Long-Range Transportation Planning
- Ongoing Freight Advisory Group Coordination



[www.hatsregionaltransportationplan.org](http://www.hatsregionaltransportationplan.org)